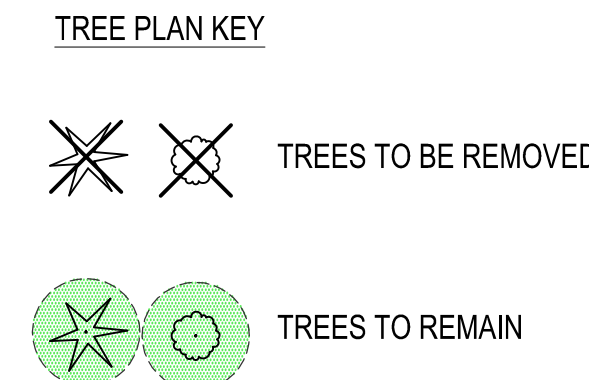
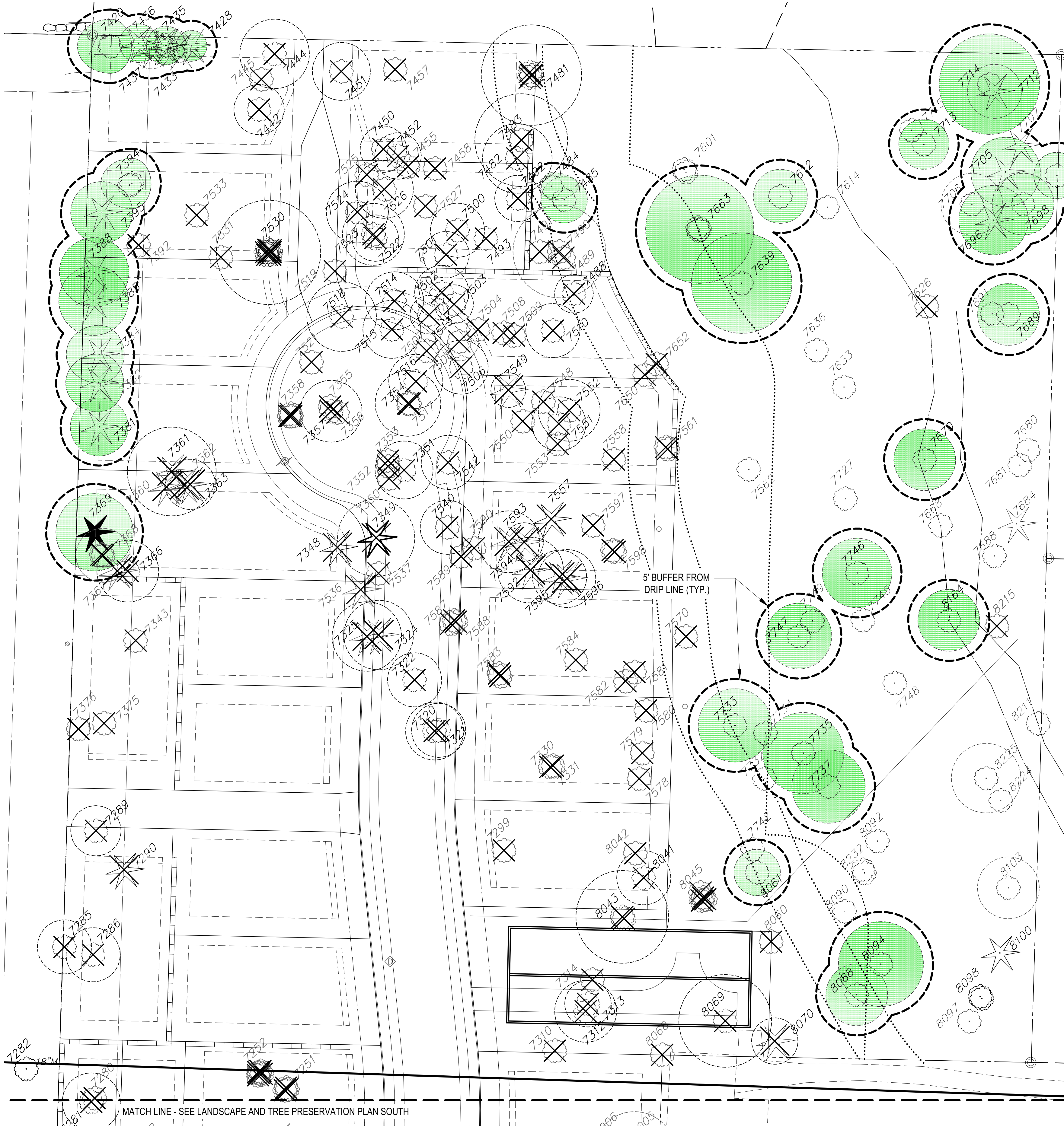


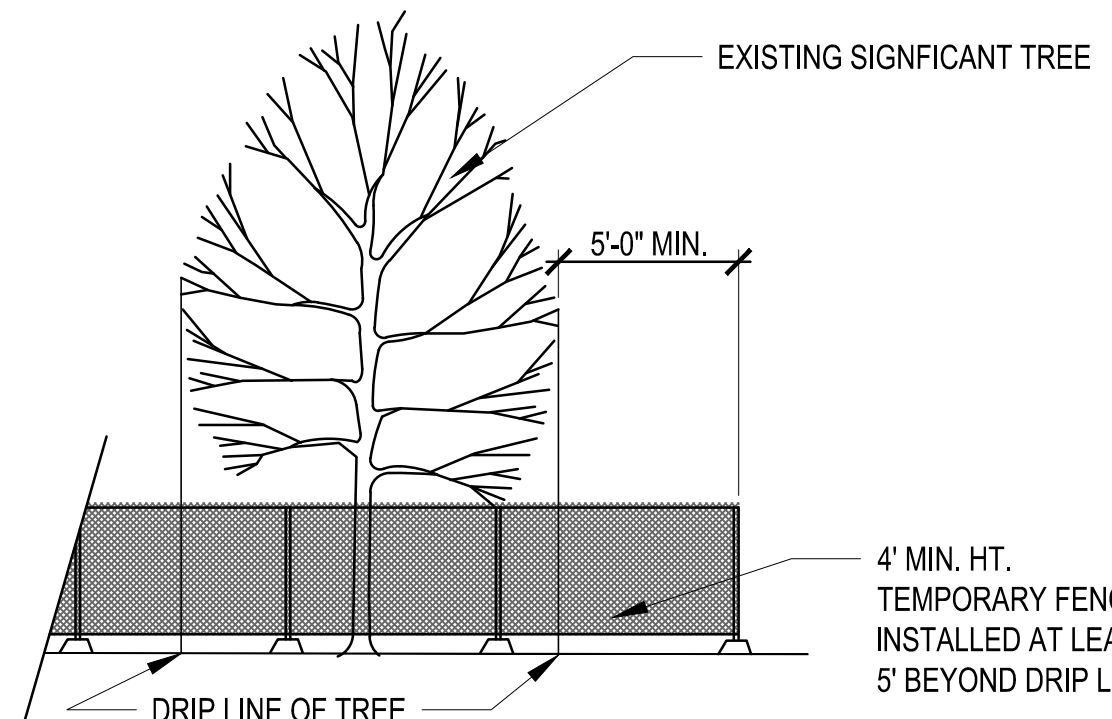
Attachment 8



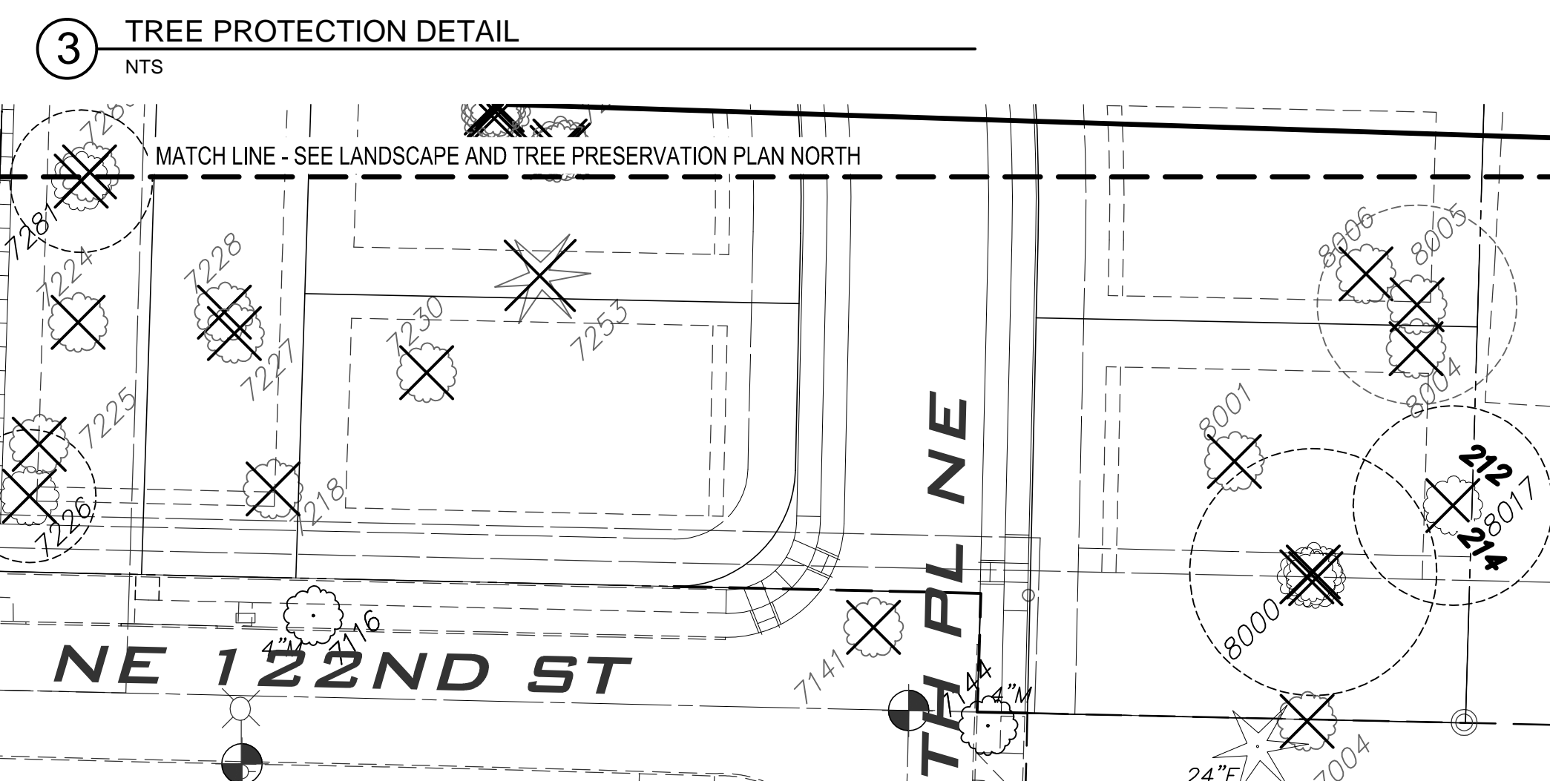
Tree Type	Proposed Action and Brief Definition			
	Removal	Impacted	Retained	Total
Landmark (>30" DBH)	Number of landmark trees removed	Number of impacted landmark trees	Number of retained landmark trees	Total Landmark Trees
	1	0	2	3
	% of Removed Landmark Trees of All Trees	% of Impacted Landmark Trees of All Trees	% of Retained Landmark Trees of All Trees	% Landmark Trees of All Trees
Significant (6" - 30")	Number of removed significant trees	% Impacted of all significant trees	Number of Retained Significant Trees	Total Significant Trees
	62	0%	35	97
	% Significant removed of all significant trees	% impacted of all significant	% retained of all significant	% significant trees of all trees
Totals	Number of Landmark + Significant removed trees	Number of Landmark + significant impacted	Number of Landmark + significant retained	Total Number of ALL Trees
	63	0	37	100
	% removed of all trees	% impacted of all Trees	% Retained of all Trees	
	63/100= 63%	0%	37/100= 37%	

Replacement Trees		
Type of tree	# removed trees	Replacement
Removed Landmark (3:1)	1	1*3 = 3
Removed Significant (1:1)	62	62*1=62
Total # of Replacement trees		3+62= 65

**35% Tree Retention**  
 RMC required 35% of significant trees be retained 100 X 35% = 35 trees  
 Proposed improvements retain 37 Trees

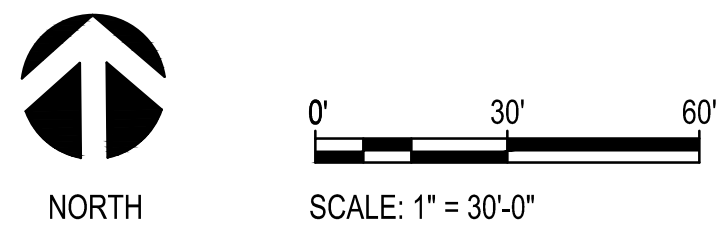


- MINIMUM 4' HT. TEMPORARY FENCE SHALL BE PLACED AT THE DESIGNATED LIMITS OF DISTURBANCE OF THE TREE TO BE SAVED. FENCING SHALL COMPLETELY ENCIRCLE TREE(S). AVOID DRIVING FENCE POSTS OR STAKES INTO ROOTS.
- TREATMENT OF ROOTS EXPOSED DURING CONSTRUCTION. FOR ROOTS OVER (1) ONE INCH DIAMETER DAMAGED DURING CONSTRUCTION; MAKE A CLEAN STRAIGHT CUT TO REMOVE THE DAMAGED PORTION OF THE ROOT. ALL EXPOSED ROOTS SHALL BE TEMPORARILY COVERED WITH DAMP BURLAP TO PREVENT DRYING AND COVERED WITH SOIL AS SOON AS POSSIBLE.
- NO STOCKPILING OF MATERIALS, VEHICULAR TRAFFIC, OR STORAGE OF EQUIPMENT OR MACHINERY SHALL BE ALLOWED WITHIN THE LIMIT OF THE FENCING. FENCING SHALL NOT BE MOVED OR REMOVED UNLESS APPROVED BY THE RESPONSIBLE OFFICIAL GOVERNING THE WORK. WORK WITHIN THE PROTECTION FENCE SHALL BE DONE MANUALLY.



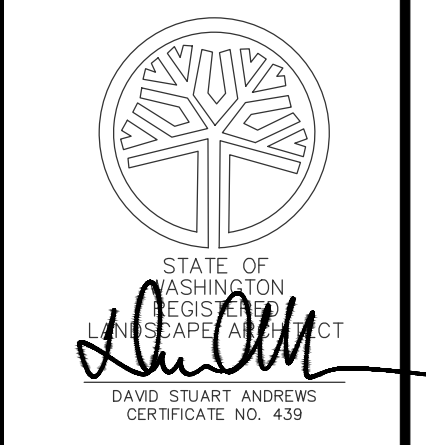
**1 PUBLIC NOTICE TREE PLAN - NORTH**  
 SCALE: 1" = 30'-0"

**2 PUBLIC NOTICE TREE PLAN- SOUTH**  
 SCALE: 1" = 30'-0"



PUBLIC NOTICE TREE PLAN

DATE	REVISION	BY	CHK. NO.
7/21/14	PRELIMINARY PLAT SUBMITTAL		
9/18/14	PLAT SUBMITTAL		
12/16/14	PREP COMMENTS		
5/18/15	RESUBMITTAL		



**EDGEWOOD EAST**  
 REDMOND, WA

CLIENT  
**QUADRANT HOMES**  
 QUADRANT HOMES, INC.  
 14725 SE 36TH STREET  
 SUITE #100  
 PO BOX 130  
 BELLEVUE, WA 98009



PROJECT NO.
SHEET TITLE
DRAWING
SHEET ____ OF ____